



ELAN  
BUILDERS



# LUNA

6394

MODERN DURAN DRIVE



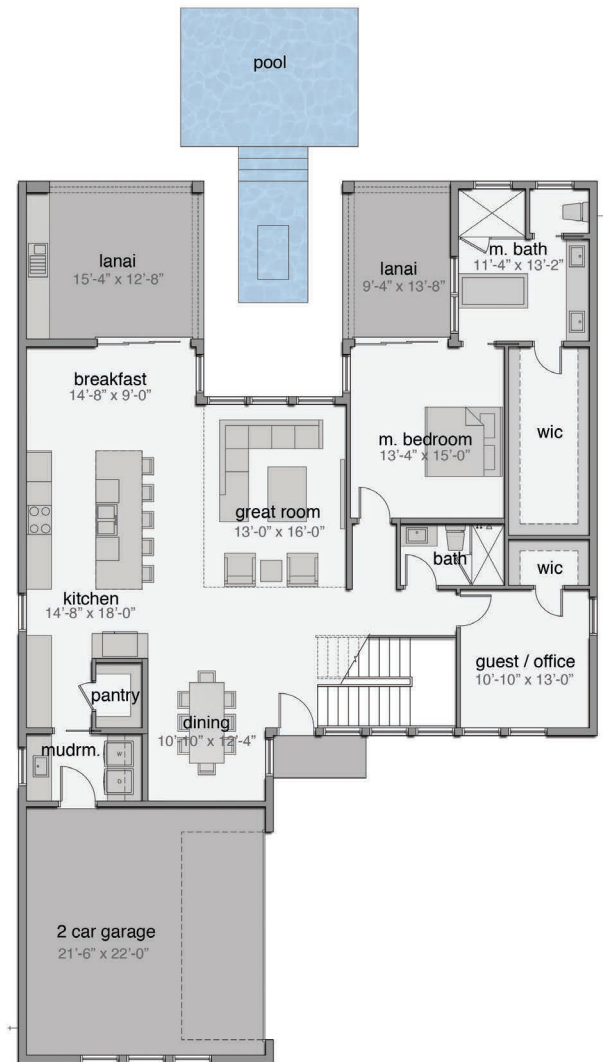
## MODERN DURAN

VIERA'S EXCLUSIVE MODERN COMMUNITY

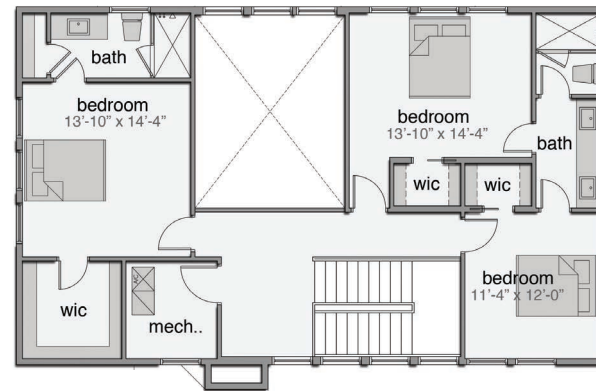


# LUNA

## FLOOR PLAN & FEATURES



MAIN LEVEL PLAN



UPPER LEVEL PLAN

**ELAN**  
BUILDERS

6013 Farcenda Place, Suite 101  
Melbourne, FL 32940  
CGC 1523713

321.241.6508

MODERNDURAN.COM

- 4 Bedrooms
- 4 Bathrooms
- Side Load 2 Car Garage
- Covered Lanai with Retractable Screens
- Expansive Open Living Area
- Office / Guest Room
- Summer Kitchen Included
- Swimming Pool Included

3,090 sq ft Living  
3,933 sq ft Total

Overall Dimensions  
50'-0" x 76'-4"

\*Renderings are for presentation purposes only. The builder/developer has the right to make changes to renderings, home finishes and community amenities at any time.