



ELAN  
BUILDERS



# POLARIS

6444  
MODERN DURAN DRIVE



## MODERN DURAN

VIERA'S EXCLUSIVE MODERN COMMUNITY



# POLARIS

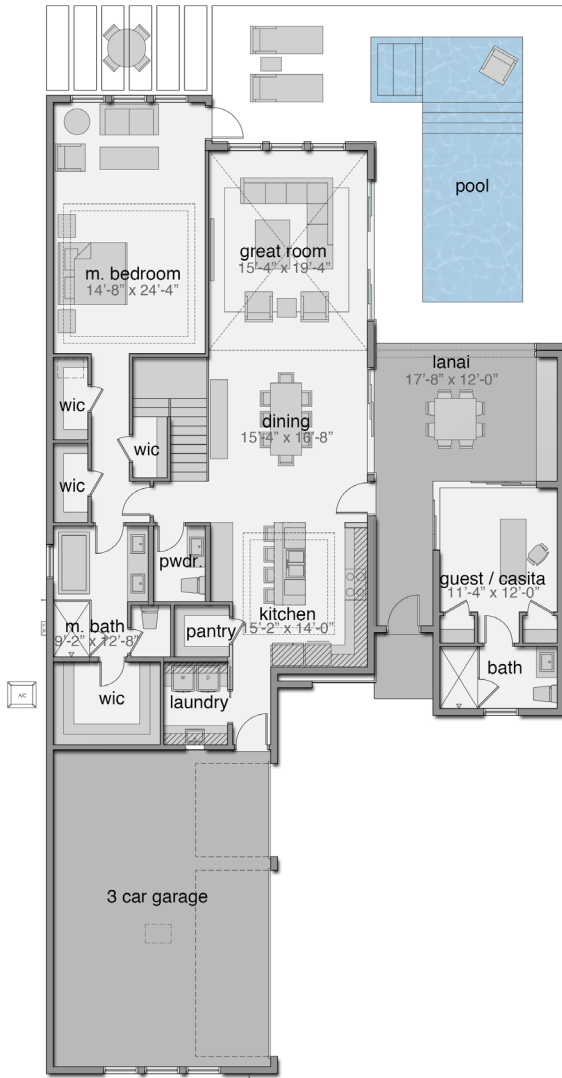
## FLOOR PLAN & FEATURES



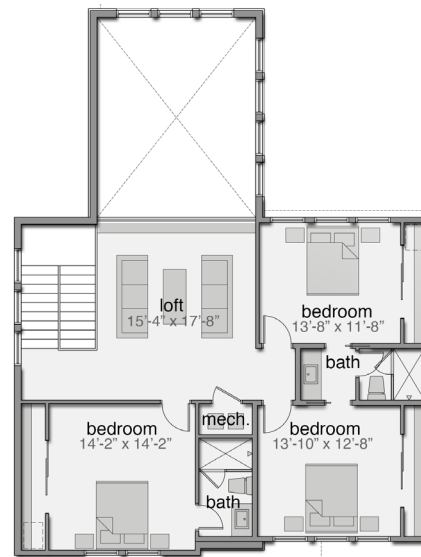
6013 Farcenda Place, Suite 101  
Melbourne, FL 32940  
CGC 1523713

321.241.6508

MODERNDURAN.COM



MAIN LEVEL PLAN



UPPER LEVEL PLAN

- 4 Bedrooms
- 4.5 Bathrooms
- Side Load 3 Car Garage
- Covered Lanai with Retractable Screens
- Loft
- Expansive Open Living Area
- Casita / Guest Room
- Summer Kitchen Included
- Swimming Pool Included

3,037 sq ft Living  
4,384 sq ft Total

Overall Dimensions  
50'-0" x 94'-8"

\*Renderings are for presentation purposes only. The builder/developer has the right to make changes to renderings, home finishes and community amenities at any time.