



ELAN  
BUILDERS



# HALO

6344  
MODERN DURAN DRIVE



## MODERN DURAN

VIERA'S EXCLUSIVE MODERN COMMUNITY



# HALO

## FLOOR PLAN & FEATURES

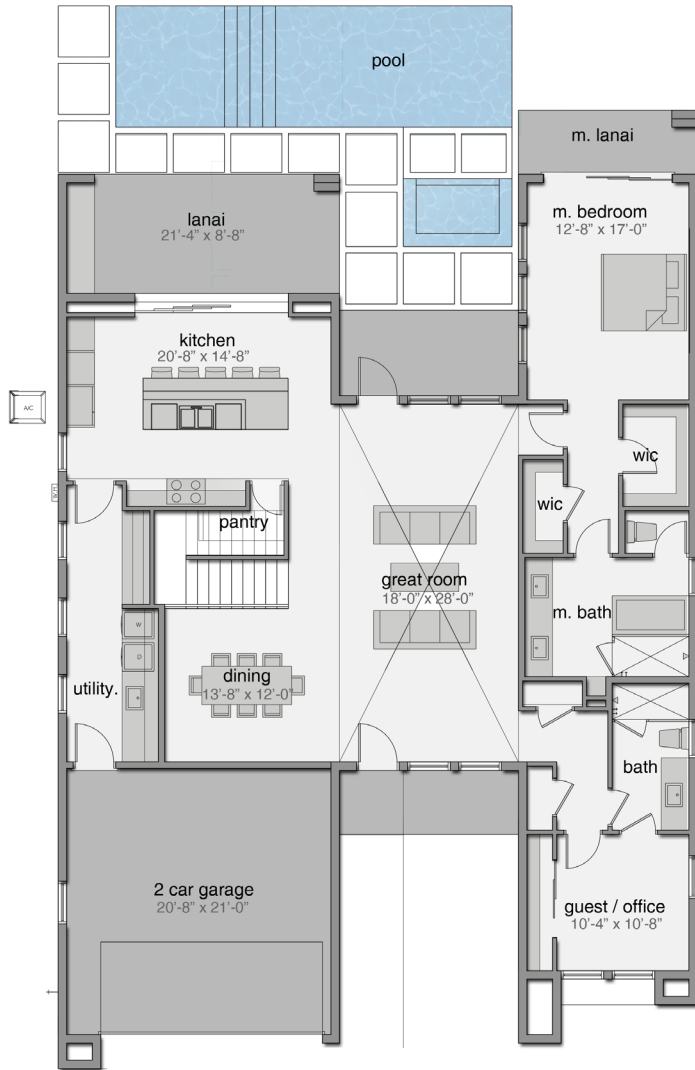


6013 Farcenda Place, Suite 101  
Melbourne, FL 32940

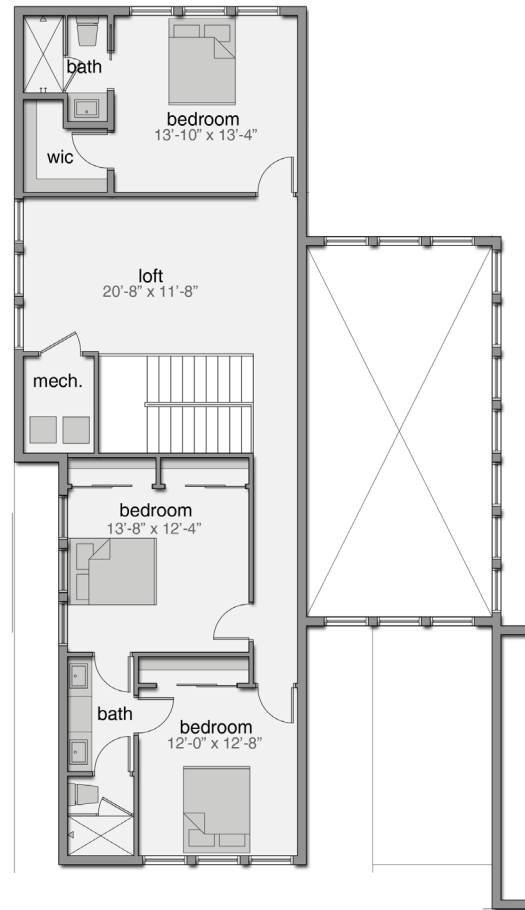
CGC 1523713

321.241.6508

MODERNDURAN.COM



MAIN LEVEL PLAN



UPPER LEVEL PLAN

- 4 Bedrooms
- 4 Bathrooms
- 2 Car Garage
- Covered Lanai with Retractable Screens
- Expansive Open Living Area
- Office / Guest Room
- Summer Kitchen Included
- Swimming Pool Included

3,346 sq ft Living  
4,097 sq ft Total

Overall Dimensions  
50'-0" x 75'-0"

\*Renderings are for presentation purposes only. The builder/developer has the right to make changes to renderings, home finishes and community amenities at any time.